

## Morrill, Richard

---

**From:** Hanavan, Ryan -FS [rhanavan02@fs.fed.us]  
**Sent:** Thursday, August 15, 2013 10:57 AM  
**To:** Kanoti, Allison M; Struble, Dave; Dodds, Kevin J -FS; Morrill, Richard  
**Cc:** Steinman, Jim -FS; Bohne, Michael -FS  
**Subject:** RE: SFMA Advisory Committee Meeting  
**Attachments:** Baxter\_Landsat8\_tornado.pptx

Hey Allison,

Kevin has filled me in on the tornado event at Baxter State Park and I saw the slides from the overflight for the SFMA. I pulled some Landsat 8 imagery (30m resolution) for the area from July 14, 2013 and July 21, 2013 and the track definitely shows up. I was also able to pick it up with both FS MODIS-driven tools (Forwarn and Forest Disturbance Mapper, both 250m resolution) to a lesser extent. The damage path shows up best with the SWIR (2.11-2.29  $\mu\text{m}$ ), NIR (0.85-0.88  $\mu\text{m}$ ), Green (0.53-0.59  $\mu\text{m}$ ) band combination which really brings the soil/downed wood out from the healthy vegetation while removing some of the other atmospheric noise (lots more clouds in the July 21 image). We are definitely able to map the path with Landsat 8 and should have some more good imagery to piece together as time passes and could provide a more robust damage analysis.

Thanks,  
Ryan

**Ryan P. Hanavan, Ph.D.**  
**Forest Entomologist**  
**USDA Forest Service**  
**Durham Field Office, NA State & Private Forestry**  
**271 Mast Road**  
**Durham, NH 03824**  
**Phone: 603-868-7715**  
**Cell: 603-397-9070**

---

**From:** Dodds, Kevin J -FS  
**Sent:** Thursday, August 15, 2013 10:31 AM  
**To:** Hanavan, Ryan -FS  
**Subject:** FW: SFMA Advisory Committee Meeting

**Kevin J. Dodds**  
**Forest Entomologist**  
**U.S. Forest Service**  
**Phone: 603-868-7743**  
**Cell: 603-397-2669**

---

**From:** Kanoti, Allison M [<mailto:Allison.M.Kanoti@maine.gov>]  
**Sent:** Wednesday, August 14, 2013 4:09 PM  
**To:** Dodds, Kevin J -FS; Morrill, Richard  
**Subject:** SFMA Advisory Committee Meeting

Kevin,

I spoke with Rick the other day re: you joining the field tour on Friday 9/27/2013 and he thought that was a good idea. I'm cc'ing him so he has your contact information. Information about the field day will be put here (Under Scientific

# Baxter State Park, ME



Landsat 8 - July 14<sup>th</sup>

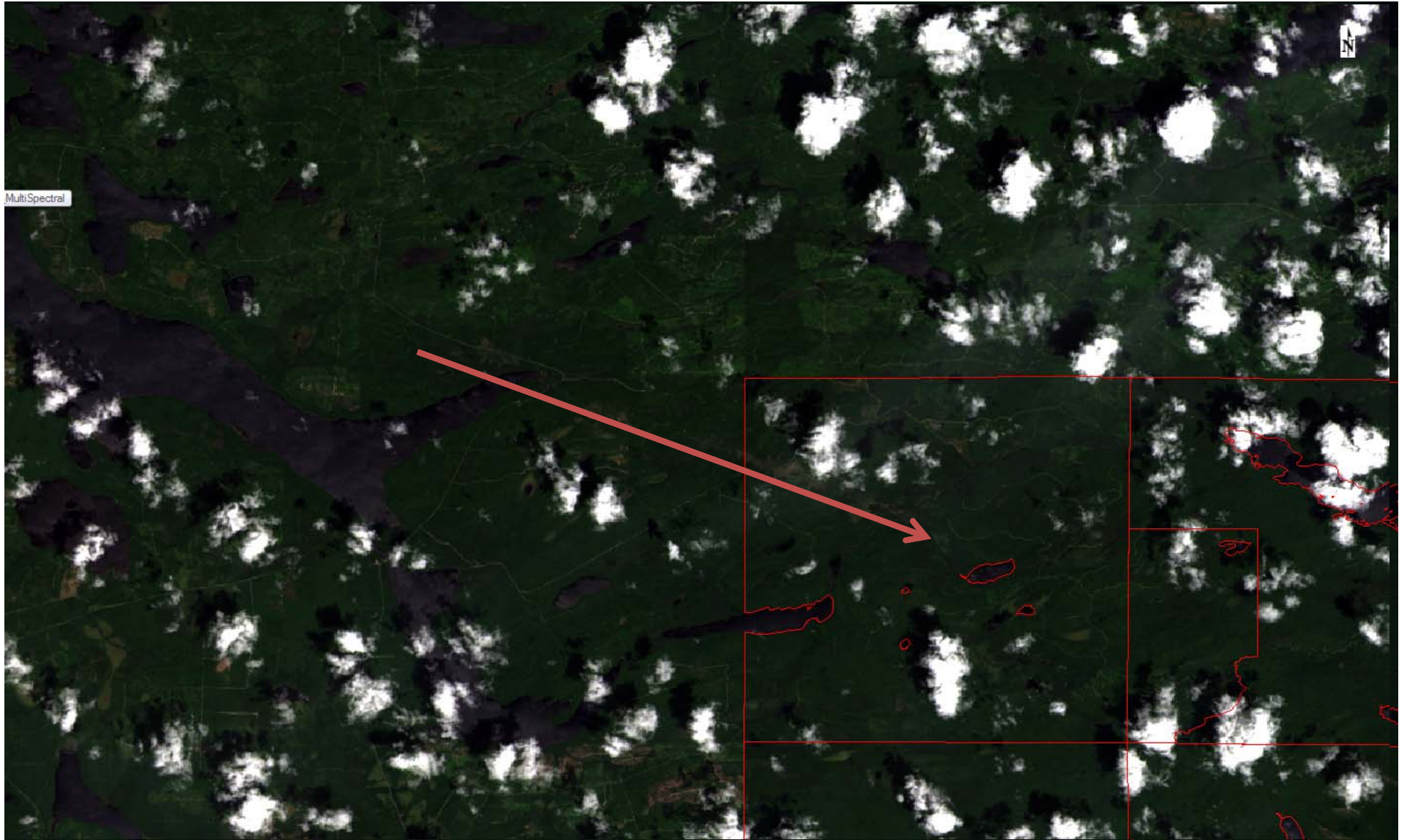
# Baxter State Park, ME



**Landsat 8 - July 21<sup>st</sup>**



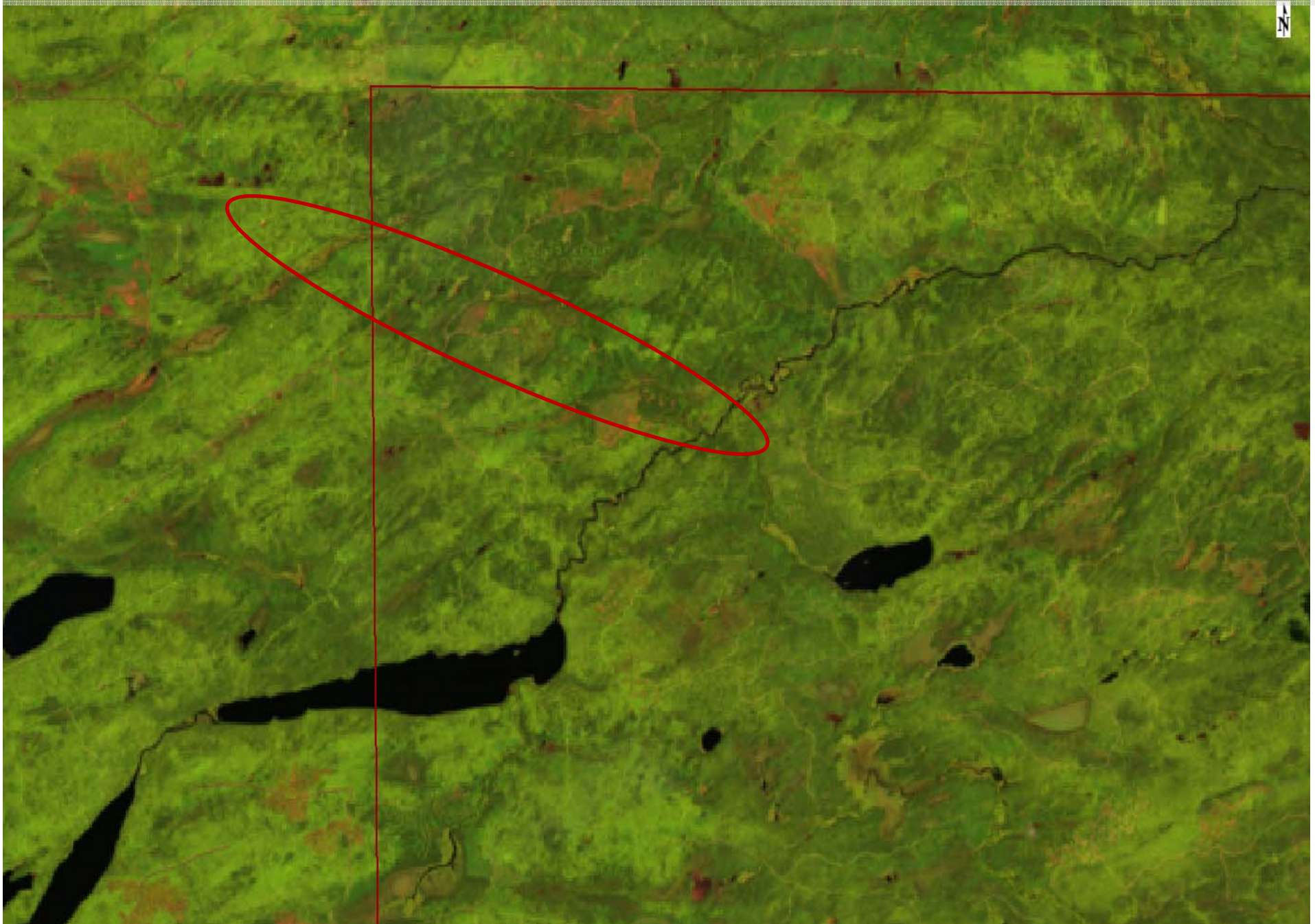
# Baxter State Park, ME



Landsat 8 - July 21<sup>st</sup>

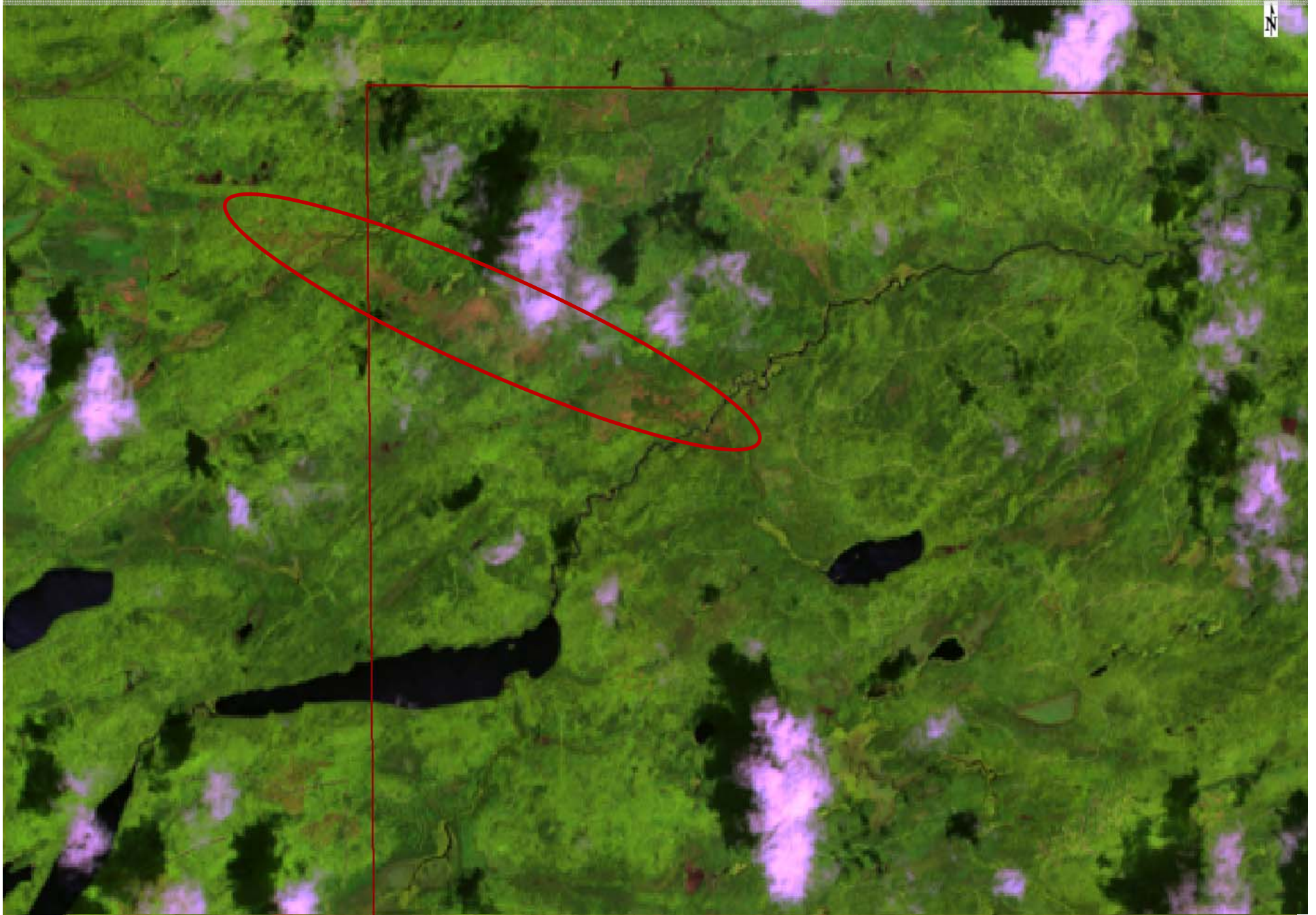


**Baxter State Park – Landsat 8 30m: 7/14/13 Band Combination 7/5/3**

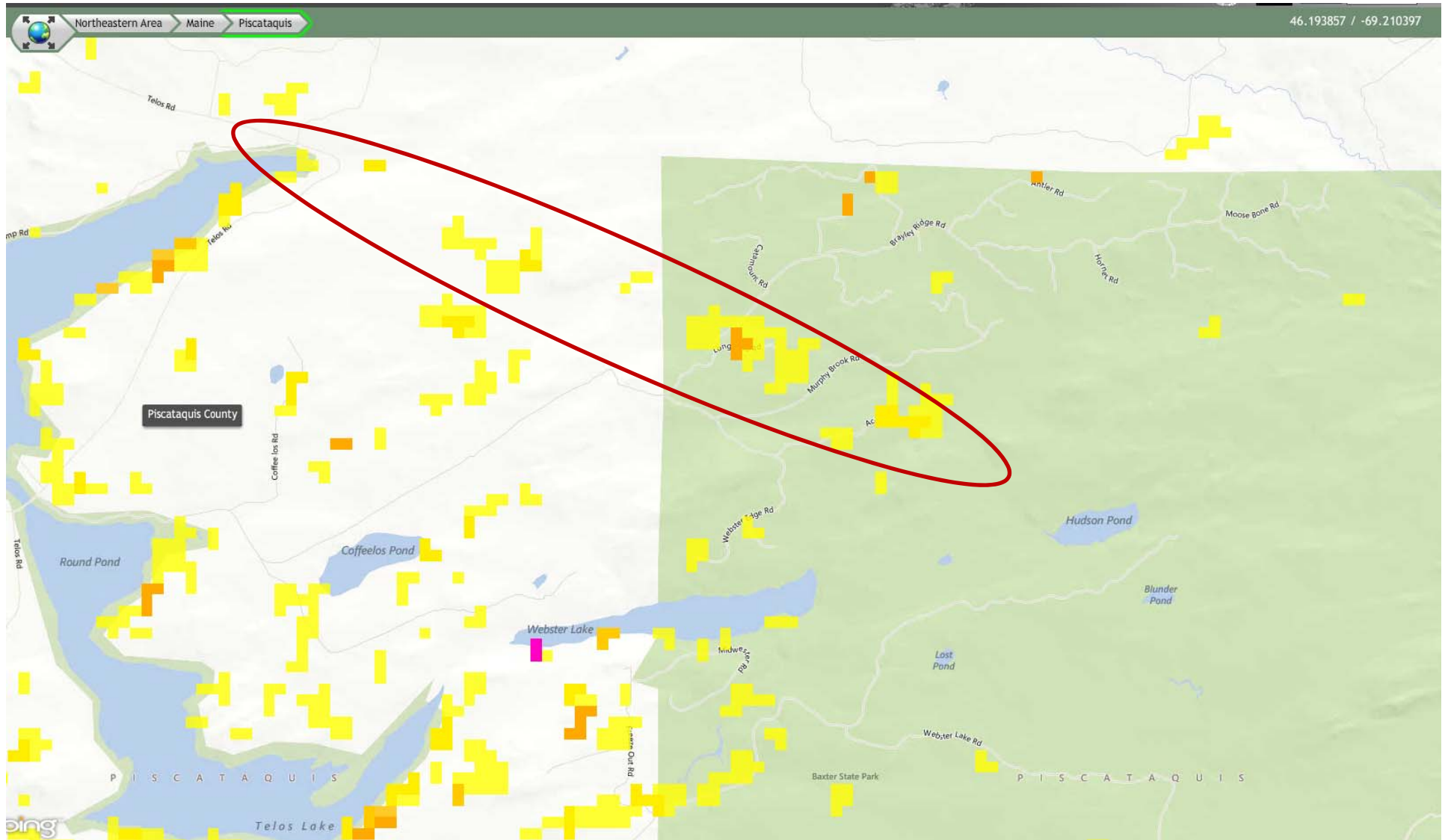




**Baxter State Park – Landsat 8 30m: 7/21/13 Band Combination 7/5/3**



# Baxter State Park – Modis 250m (Forest Disturbance Mapper)





# Baxter State Park – Modis 250m (Forwarn)

